

712 N. Second St.
Historic Laclede's Landing (c. 1870)

Call: Victor Mattison
Fax: 314.655.7701

Phone: 314.276.7834
Email: officespace@accessus.net

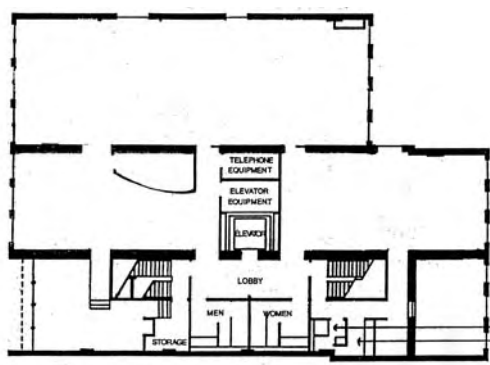
**OFFICE
SPACE FOR
LEASE**

**PRIME
DOWNTOWN
LOCATION**

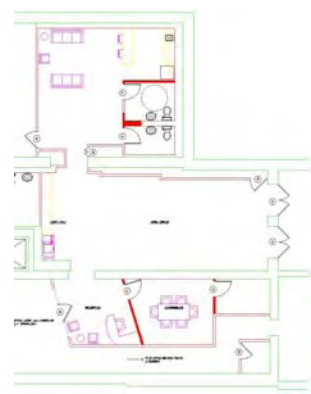


- *National Historic Register Building*
- *Circa 1870; Renovated in 2000*
- *Private Bathrooms & Kitchens*
- *ADA Accessible*
- *Great Visibility*
- *Owner Occupied (3rd Floor)*
- *Adjacent to Coffee House*
- *One Block From MetroLink Station*
- *Two Blocks From the \$400M Pinnacle Land Development Project Expected to Open in 2007*
- *Two Blocks From the Gateway Arch*
- *Approx. 5,000 Sq Ft Available on 2nd Floor*
 - ▲ *Well-Lit Open Floor Plan Allows Great Flexibility*
- *Approx. 2,000 Sq Ft Available on Garden Level*
 - ▲ *Garden Level Office With Gated, Private Patio*
- *Option For Adjoining 1,800 Sq Ft on Garden Level*
 - ▲ *Adjoining Space Great for Storage*
- *Entire Building Networked For Internet Connectivity*
 - ▲ *Ethernet Cabling Already Installed*
- *Creative Lease Options Available*

THE CAST IRON BUILDING



2nd Floor



Ground Floor

